

RANGE 8A

SOP

RANGE DESCRIPTION

Range 8A is an active; Light armor assault range located at Grid 77906960. It is accessible from route 610.

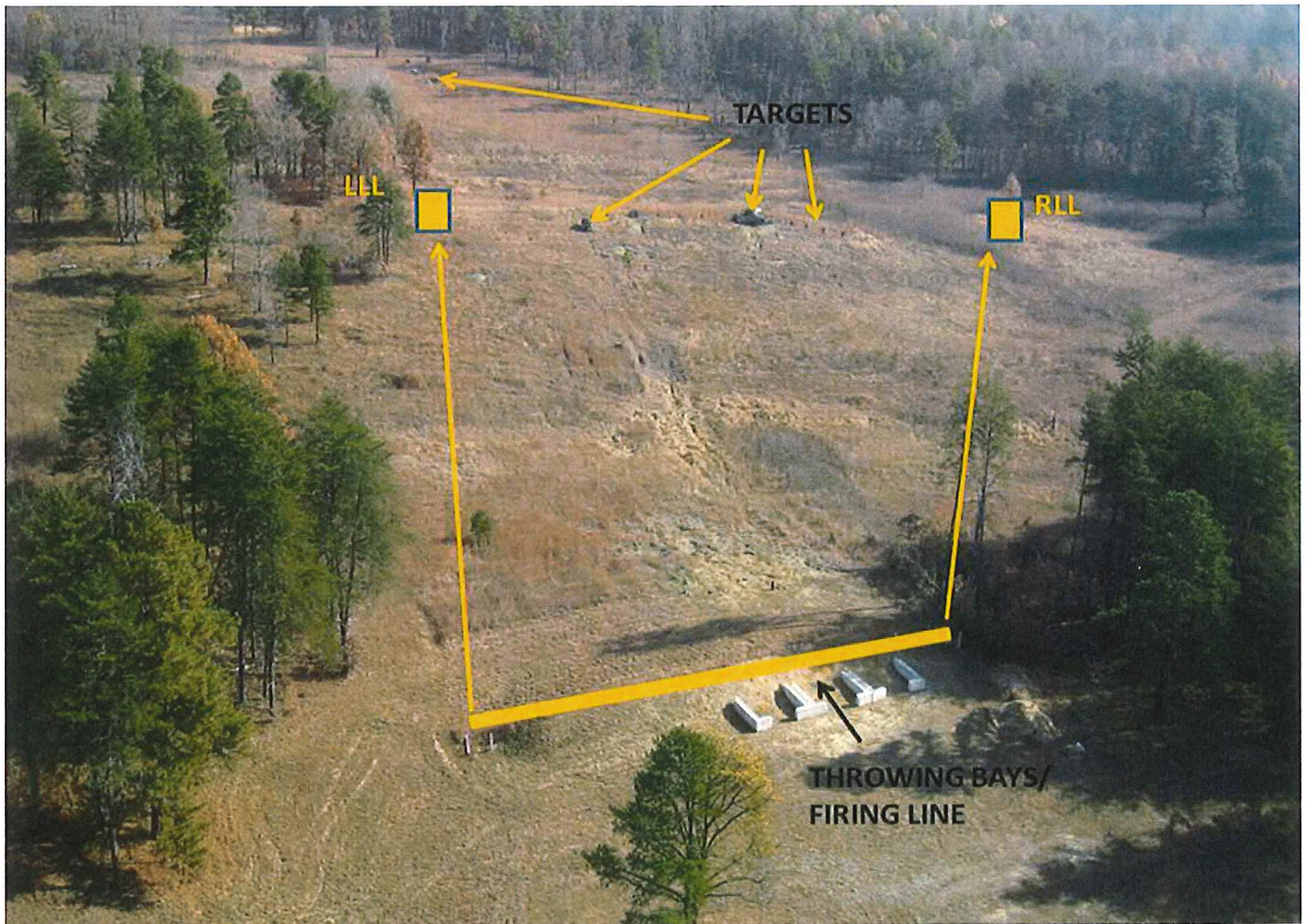
Primary Use: Familiarization firing of light anti-tank weapons and assault rocket launchers.

Alternate Uses: Small arms firing, hand grenade training, 81mm mortar firing position.

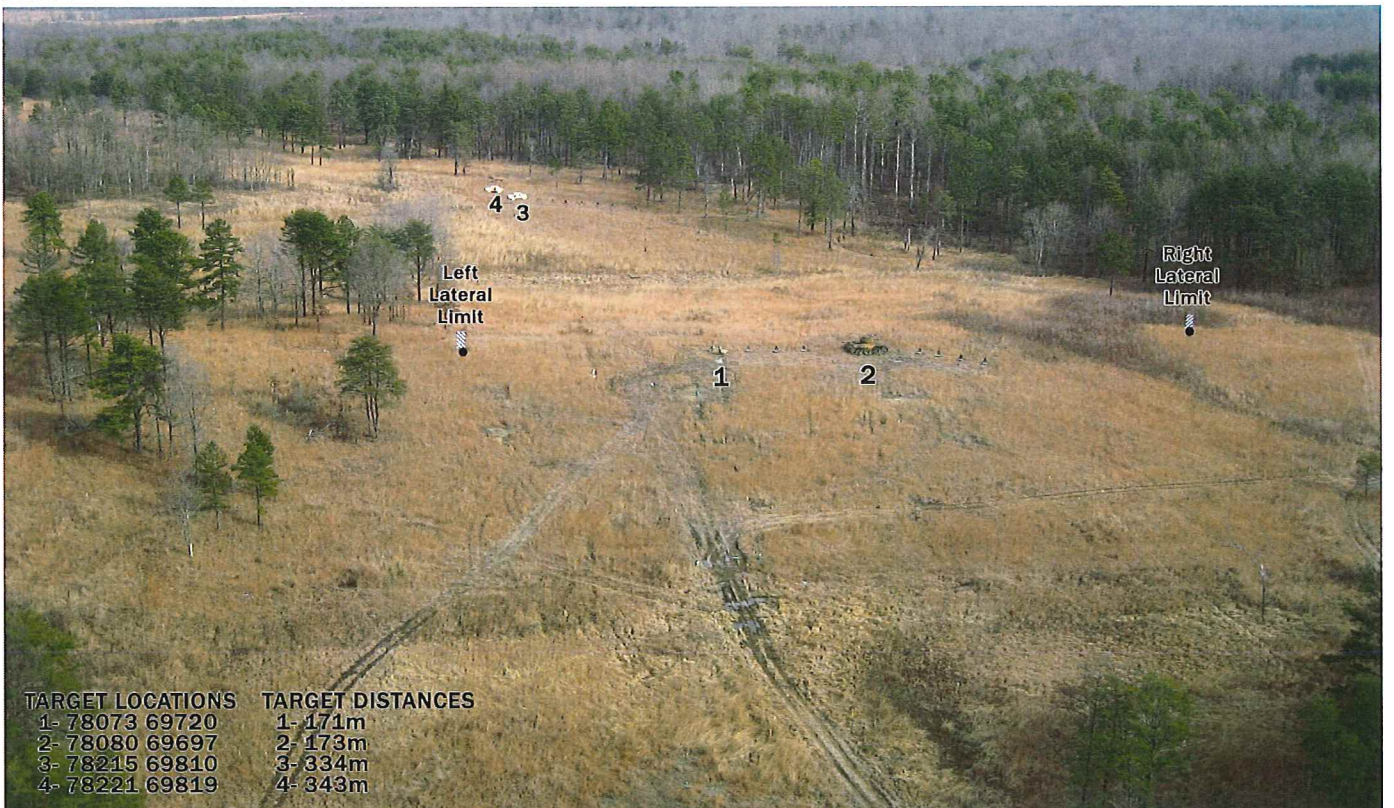
RANGE 8A OVERHEAD



RANGE 8A



RANGE 8A DOWNRANGE



FIRING LINE/GRENADE PITS



RANGE 8A



WEAPONS ACCOMMODATED	AMMUNITION AUTHORIZED
Service Pistols	.22, 9mm, .40, .45, .50
Service Rifles	5.56mm, 7.62MM
Service Shotgun	12 Gauge (All)
Handheld grenade launchers	40mm HE, HEDP, Smoke, Illum, Prac
Hand Grenades	Frag/Prac/Illum
Machine Guns	5.56, 7.62,
Infantry Automatic Rifles	5.56, 7.62
Sniper Rifles	5.56, .308,
SMAW/SMAW MOD 2	83mm HE/INERT rocket, spotter/trainer round
MAAWS	83mm HE/INERT rocket, spotter/trainer round
LAW	66mm rocket, 21mm trainer
AT-4	84mm HE/INERT rocket, spotter/trainer round
81mm Mortar	HE, Illum, Smoke (Into Range 7 IA)
Foreign Weapons	Up to 7.62 x 54R
LASER	Class 4

Targets:

There are multiple stationary armored vehicle/personnel targets located on range 8A.

<u>Target Description</u>	<u>Quantity</u>
Stationary armored vehicles	4
Stationary personnel	Multiple

ADDITIONAL RANGE INFORMATION:

PRIMARY DIRECTION of FIRE: East

SPECIAL INSTRUCTIONS/COMMENTS:

1. The only weapons and ammunition approved for use on this range are listed in this document. There shall be no deviations from or modification to the approved weapons and ammunition.
2. The Officer-in-Charge (OIC) shall be the rank of Staff Sergeant or above and will be certified in accordance with MCB Range Regulations. The Range Safety Officer (RSO) shall be the rank of Sergeant or above and will be qualified in accordance with MCB Range Regulations.
3. The OIC and RSO must be physically present on the range at all times during live fire training and events.

4. All brass, trash, targetry and materials will be removed completely at the end of training by the using unit. This includes any materials used to place targets on.
5. Ensure range flags are posted, ear protection is worn (eye protection for steel), safety brief is given, Range Control contacted and all fires are directed between the left and right lateral limits markers (black and white striped).
6. There is no movement authorized forward of the firing line. EOD support is required to go forward of the firing line.
- 7. If steel targets are used in conjunction with EOD support, they will not be fired on closer than 150m with 5.56mm or 7.62mm.**
8. Troops may not occupy covered bleachers while hand grenade or rocket training is being conducted.
9. All individuals must throw practice grenades and be proficient in safety precautions prior to live grenade training.
10. If a dud occurs all training must stop. All personal will remain under cover for five minutes. After five minutes have passed, the ROIC/RSO will contact Range Control, call in "cold," and request EOD support. Once the range is cleared by EOD, the ROIC/RSO can request to be put back in a "hot" status.
11. The areas within the grenade throwing pits must be clear of grass taller than ankle high.
12. HERO sensitive munitions are commonly used on this range. It is the OIC/RSO responsibility to understand all capabilities and limitations of their munitions. Ensure sure all necessary HERO precautions are taken.
13. Targets will not be engaged with the AT-4, MK153 SMAW or MAAWS at ranges closer than 100 meters (MCO 3570.1C states 50 meters). There are no targets suitable for these weapons closer than 100 meters.
14. All personnel on Range 8A will wear helmet, body armor and eye/ear protection.
15. While using hand grenades, all individuals on range must wear helmets and flak jackets and remain in a covered position (behind bleachers or in practice area) when the range is "hot."
16. The gunner, A-gunner and all personnel within 100 meters of the firing point of the SMAAW and MAAWS must wear double ear protection.
17. All rockets will be fired from the top of the berm.
18. The gunner and A-gunner can only be exposed to 5 rockets each per day.

19. At no time will live/blank or live/INERT ordnance be mixed, issued together or carried together. If rehearsals are to be done with blanks or INERT training devices, those rehearsals will be completed before the issuing of live ammunition or ordnance. Once live ammunition or ordnance is issued, there will be no more rehearsals. The Range OIC will ensure the supervision of individuals from the issue point to the main firing line.

20. Units that have requested contractor support (i.e., automated targets, PITS targets, battlefield effects simulators, etc.) that are not present on the specified range within 1 hour of the requested time and have not contacted RMB/TSCQ will forfeit all contracted support for the day.

21. Units that have occupied a range with approved contractor support (i.e., automated targets, PITS targets, battlefield effects simulators, etc.) and that have not begun to use that support within 2 hours of the requested hour of operation will forfeit all contracted support for the day.

22. Units that are training with contractor support (i.e., automated targets, PITS targets, battlefield effects simulators, etc.) that place themselves voluntary into check fire for 2 hours during the approved support operational hours will forfeit all support for the day.

NOTE: Units that encounter situations where contractor support (i.e., automated targets, PITS targets, battlefield effects simulators, etc.) is delayed or interrupted by circumstances beyond the control of the requesting unit (i.e., RMB directed check fire, ASP support, MEDEVAC, etc.) must contact RMB/TSCQ in order to arrange continued support within the scope of the contract and available assets.

23. There is no downrange movement on **Range 15A (Treeline)** when Range 8A is firing 5.56, 7.62, 7.62 Special Ball and SMAW.

24. There is no downrange movement on **Range 15 (Dudded Impact Area)** when **Range 8A** is firing 5.56, 7.62, 7.62 Special Ball, SMAW, AT-4 Trainer or M72A7 LAAW.

25. Range 15 Cannot be occupied when Range 8A is firing AT-4 84mm HEAT.

26. Range 8A cannot be occupied when Range 15A is conducting live-fire maneuver/envelopment.

27. 81mm mortars can be fired from Range 8A into the Range 7 high hazard impact area.

APPLICABLE MAP SHEET. All grid coordinates listed in this order apply to the Quantico Military Installation Map V834S Edition 4-NGA 1:25000.

FACILITIES

Towers: 0
Sheds: 2
Ammo Breakdown table: 0
Parking: No
Bleachers: Yes
Head Facility: Port-A-Johns

UTILITIES AVAILABLE

Electricity: None
Lights: None
Water System: None

INSTALLED COMMUNICATIONS. None

<u>Nearest MEDEVAC LZ</u>	<u>MILES</u>	<u>GRID</u>
LZ Blackbird	.75	77406860

Directions to MEDEVAC LZ: Exit Range 8A, turn left, go through first gate and take a left to Range 8. LZ Blackbird is directly behind the Range 8 firing line, on the slightly sloped hill.

LASERS AUTHORIZED. Class 4 and below. For more, see current laser range certification.

COMMUNICATION REQUIREMENTS:

1. A radio check is required immediately upon occupying any portion of the RTA, every 30 minutes in a live fire status and every 3 hours in a non-live fire status.
2. The Range Control Facility (RCF) Fire Desk Net Control call sign is "Range Control". Your call sign is "Range XX" (name of range, training area or facility unit is occupying).
3. The primary RCF Fire Desk Net Control frequencies are: ELMR talk group "RC Safety" (ground) and 323.7 AM UHF (air).
4. The secondary RCF Fire Desk Net Control is telephone, numbers: 703-784-5321 or 5322.
5. OIC/RSO will monitor the RCF primary and secondary Safety Nets at all times. Instant communication is required.
6. Any unit with organic ELMR radios will have their ELMR radios programmed with the "RC Safety" talk group and use those radios as their primary means of communication within the RTA.
7. Units without organic ELMR assets will be issued ELMR radios from RMB upon check-in.

8. Approved Non-ELMR radios are only authorized for internal communication (ground).

9. If the RCF cannot reach a unit within the RTA via primary communication, the unit will be contacted via the secondary means of communication.

10. Upon loss of primary communication the OIC/RSO will initiate a "check fire"/cease training status and will contact the RCF via secondary communication. This communication will be maintained while primary communication is being restored. Units may only resume firing/training once primary communication has been re-established and clearance is granted by the RCF.

INJURY CLASSIFICATIONS:

Injuries are classified into the following categories in order to aid in casualty evacuation from the RTA.

1. ROUTINE. Routine injuries are those injuries that are not threatening to life, limb or eyesight; and conditions or illnesses treatable by medication or procedures available at the base medical facilities.

2. PRIORITY. Priority injuries are those injuries that require immediate medical attention but are not threatening to life, limb, or eyesight if treated promptly.

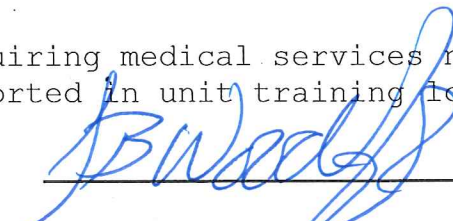
3. URGENT. Urgent injuries are severe injuries that are threatening to life, limb, or eyesight and require immediate medical attention.

4. MASS CASUALTY. A mass casualty is a series of injuries with multiple priority and urgent medical patients.

MEDICAL EVACUATION (MEDEVAC) PROCEDURES:

1. Injury occurs.
2. Range immediately cease-fires.
3. Medical support evaluates/treats injured personnel.
4. Range OIC/RSO notifies the RCF of the injury, is the victim conscious/unconscious and what type of MEDEVAC transportation is requested (ground/air).
5. The OIC/RSO must maintain constant radio contact with Range Control and awaits further instructions.

*Minor injuries and illnesses not requiring medical services need not be reported to the RCF but should be reported in unit training logs.



Range Control Officer
Date: 29 SEPT 2017